

eSkyScape™ - 47273 Specifications

4K Triple Monitors

100 – 240 V, 500 Watts per monitor, 50 – 60 Hz

Resolution: 3840*2160

Dimensions : 2323mm (L) x 1323 (W) x 160mm (D)

132 lbs (60 kg)

Mounting Enclosure

Modular aluminum extrusion

110 lbs. (50 kg)

Protects Sky monitors, facilitates wiring, provides for proper cooling

Mounted utilizing 6 brackets; each bracket with 2 - 1/4" diameter slotted holes

Monitors mounted on swing frames for wiring and maintenance

Requires opening in ceiling to receive enclosure, cabling and cooling duct

Conduit not specified, 1 1/2" and 1" conduit boxes provided on request

see Installation Instructions for details

Recessed applications

Cooling System

In-line fan

Power Consumption: AC; 65 Watts for 240V AC Cooling

plenum

Ducting between manifold and fan, fan and air inlet not provided

Video/Audio Playback Equipment

Video/Audio Playback Unit (VPU)

Plug and play enclosure.

Voltage specific: 110-120V AC and 220-240V AC

Power Consumption: 500 Watts

Power cord terminated with standard IEC C14 connector

Extension cord provided for locations compatible with NEMA 5-15P,

CEE 7/7 Hybrid Shuko/French or UK BS1363 plug

All other locations must provide local connector to IEC C13 connector extension cord

28 lbs (12.7 kg)

Wall Mounted Controller

9 – 16 V DC supplied by VPU via CAT cable

High-contrast TFT LCD, Full UGA (480 x 64 pixel) with 65k colors touchscreen

Standard colors available

Cabling

Three HDMI cables (length specified according to order, 50' (15.3m) standard)

One CAT cable, ends not terminated (length specified according to order, 100' (30.5m) standard)

50' (15.3m) +/- for VPU to monitors

50' (15.3m) +/- for VPU to wall mounted controller

One junction box with three 5.5' (1.68m) power cords terminated on one end with IEC 60320_C13 receptacle.

If plenum cabling or additional length is needed, contact ACORE for pricing.

Line Voltage Electrical Requirements

Line voltage and low voltage in separate conduit:

Line voltage requires 1 1/2" (38mm) conduit, Low voltage requires 1" (25.4mm) conduit

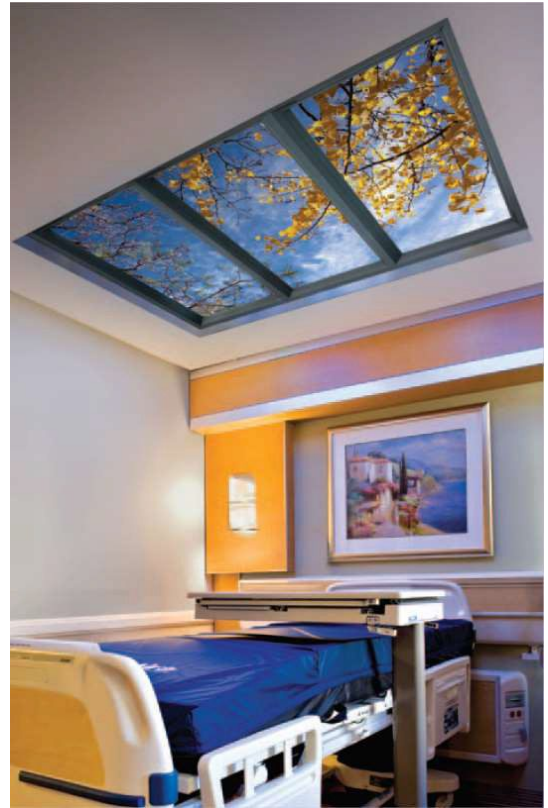
Total Power Consumption: 750 Watts for 240V AC

Circuit Recommendations: a separate circuit is advisable

500 Watts monitor location; 36 Watts for 120V AC or 70 Watts for 240V AC cooling fan location;

250 Watts VPU location

Power Surge Protection: recommended, but not provided



Viewable Image Area:
(1962mm x 1183mm)

Video Content: Long form, real time, continuous **4K UHD*** Videos

Up to 8 hours ranging from 1 to 3 hours per video

***4K UHD (Ultra High-Definition Resolution):**

With overall resolution of 3,840 x 2,160 ACORE

4K UltraHD delivers four times more detail

than full 1080p HD content.

Warranty

5-year limited warranty on entire system

Trim

Monitor trim dark gray painted wood with low glare finish for optimal viewing

Skirt trim (primed) for transition from monitor trim to existing ceiling